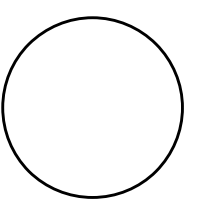


CONSULTANT:



IOWA DEPARTMENT OF NATURAL RESOURCES

ENGINEERING SERVICES - WALLACE BUILDING
502 E. 9TH ST., DES MOINES, IA 50319-0034



PROJECT LOCATION MAP

ROAD MAINTENANCE FOR:

DOLLIVER MEMORIAL STATE PARK

WEBSTER COUNTY

NO.	BY	REVISION

DRAWN BY: PROJECT NUMBER:
23-02-94-01

CHK'D BY: DATE:

SHEET NO:

A.02

PAVEMENT PRESERVATION

LOCATION	LENGTH (FT)	WIDTH (FT)	AREA (SY)	TRANSVERSE JOINT REPAIRS (COUNT)	TRANSVERSE JOINT REPAIRS ASPHALT (TON)	MILES	FULL DEPTH PATCH COUNT	FULL DEPTH PATCH (SY)	FOG SEAL (GALS)	SUBBASE, 6" (CY)	
100 Stationing	765.5	14	1,190.8	9	4.6	0.14			59.6		
200+00-202+88	288.0	18	576.0			0.05			28.8		
202+88-205+06.6	218.6	12	291.5			0.04			14.6		
205+06.6-216+59	1,152.4	12	1,536.6	6	2.7	0.22	2	5.8	76.9	1.0	Transverse joint repairs includes 300 and 400 Stationing
300 Stationing	302.2	12	403.0			0.06	1	10.7	20.2	1.8	
400 Stationing	372.1	12	496.2			0.07			24.9		
500 Stationing	423.6	22	1,035.5	3	2.4	0.08			51.8		
600 Stationing	245.0	16	435.6			0.05			21.8		
650 Stationing	80.0	16	142.3			0.02			7.2		
700+00-707+10	710.0	18	1,420.0	15	9.8	0.13	4	50	71.0	8.4	
707+10-713+95.4	685.4	16	1,218.5			0.13	3	41.1	61.0	6.9	
800 Stationing	434.5	24	1,392.7	8	7.0	0.08			69.7		
			10,138.7	35	26.5	1.08	10	107.6	507.5	18.1	

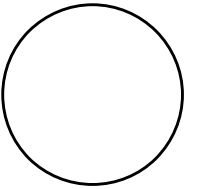
ROCK ROAD

LOCATION	LENGTH (FT)	WIDTH (FT)	TON
900 Stationing	231.1	16	43.2
1000 Stationing	275.6	16	51.5
1100 Stationing	234.1	14	38.3
	740.8		133.0

SHOULDER ROCK

LOCATION	LENGTH (FT)	WIDTH (FT)	TON
800 Stationing LT	100.0	3	3.5
800 Stationing RT	100.0	3	3.5
*Other locations per Field Engineer			7.0
	200.0		14.0

CONSULTANT:



IOWA DEPARTMENT OF
NATURAL RESOURCES

ENGINEERING SERVICES - WALLACE BUILDING
502 E. 9TH ST., DES MOINES, IA 50319-0034



QUANTITIES AND GENERAL INFORMATION

ROAD MAINTENANCE FOR:
DOLLIVER MEMORIAL STATE PARK
WEBSTER COUNTY

NO.	BY	REVISION

DRAWN BY: PROJECT NUMBER:
23-02-94-01

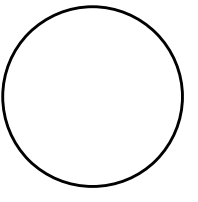
CHK'D BY: DATE:

SHEET NO:

C.02



CONSULTANT:



**IOWA DEPARTMENT OF
NATURAL RESOURCES**

ENGINEERING SERVICES - WALLACE BUILDING
502 E. 9TH ST., DES MOINES, IA 50319-0034



SITE PLAN

ROAD MAINTENANCE FOR:

DOLLIVER MEMORIAL STATE PARK

WEBSTER COUNTY

NO.	BY	REVISION

DRAWN BY: PROJECT NUMBER:
23-02-94-01

CHK'D BY: DATE:

SHEET NO:

D.02

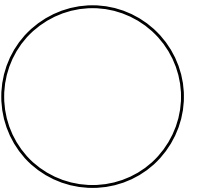


Approximate Location of Existing Box Culvert

2" Class A Roadstone



CONSULTANT:



IOWA DEPARTMENT OF NATURAL RESOURCES

ENGINEERING SERVICES - WALLACE BUILDING
502 E. 9TH ST., DES MOINES, IA 50319-0034



SITE PLAN

ROAD MAINTENANCE FOR:

DOLLIVER MEMORIAL STATE PARK

WEBSTER COUNTY

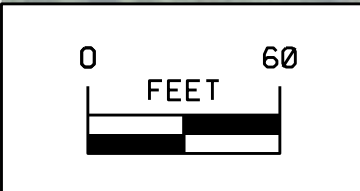
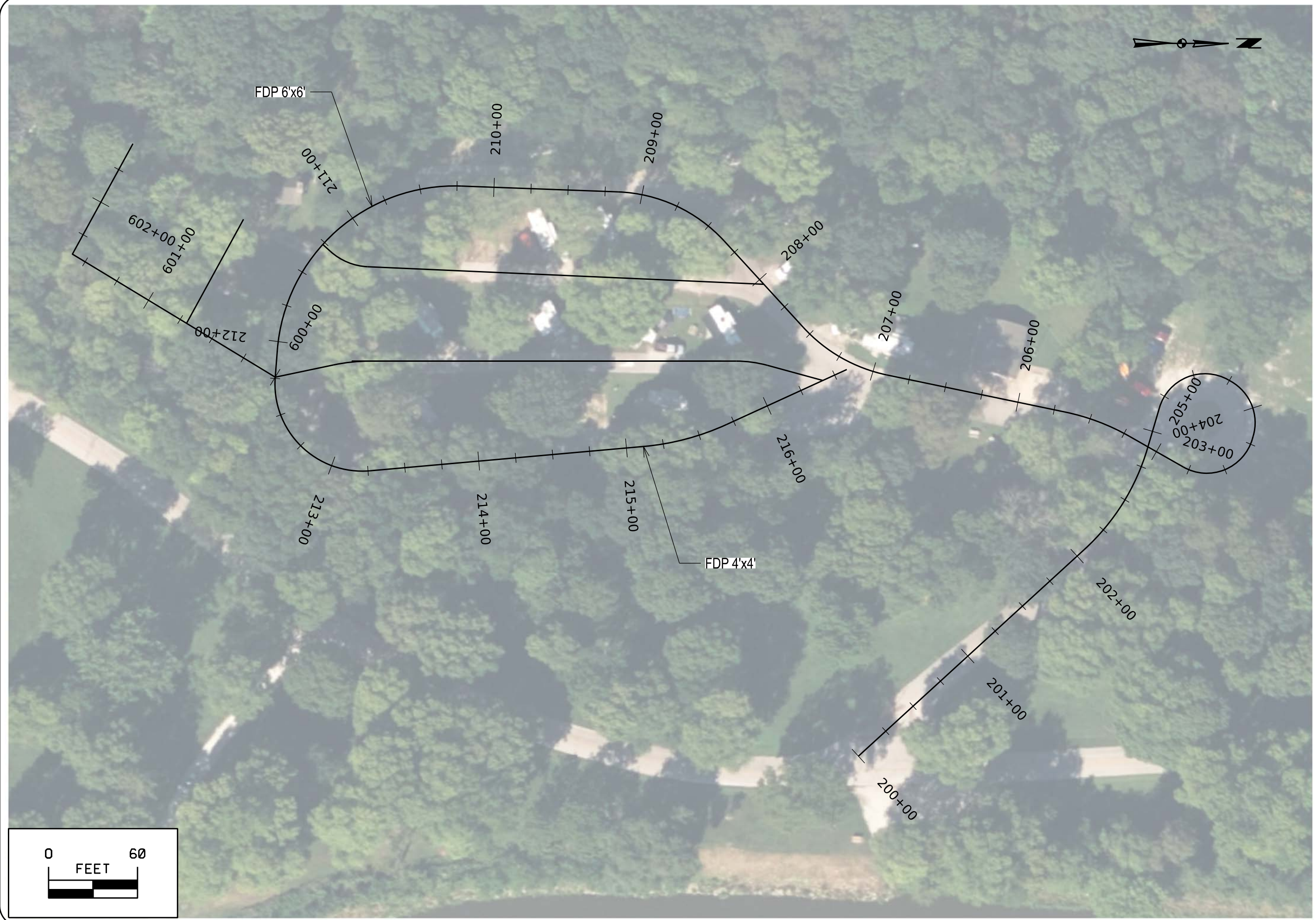
NO.	BY	REVISION

DRAWN BY: PROJECT NUMBER:
23-02-94-01

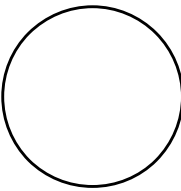
CHK'D BY: DATE:

SHEET NO:

D.03



CONSULTANT:



IOWA DEPARTMENT OF NATURAL RESOURCES

ENGINEERING SERVICES - WALLACE BUILDING
502 E. 9TH ST., DES MOINES, IA 50319-0034



SITE PLAN

ROAD MAINTENANCE FOR:

DOLLIVER MEMORIAL STATE PARK

WEBSTER COUNTY

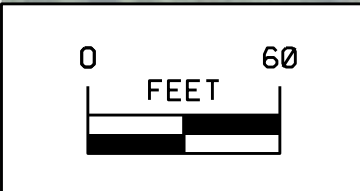
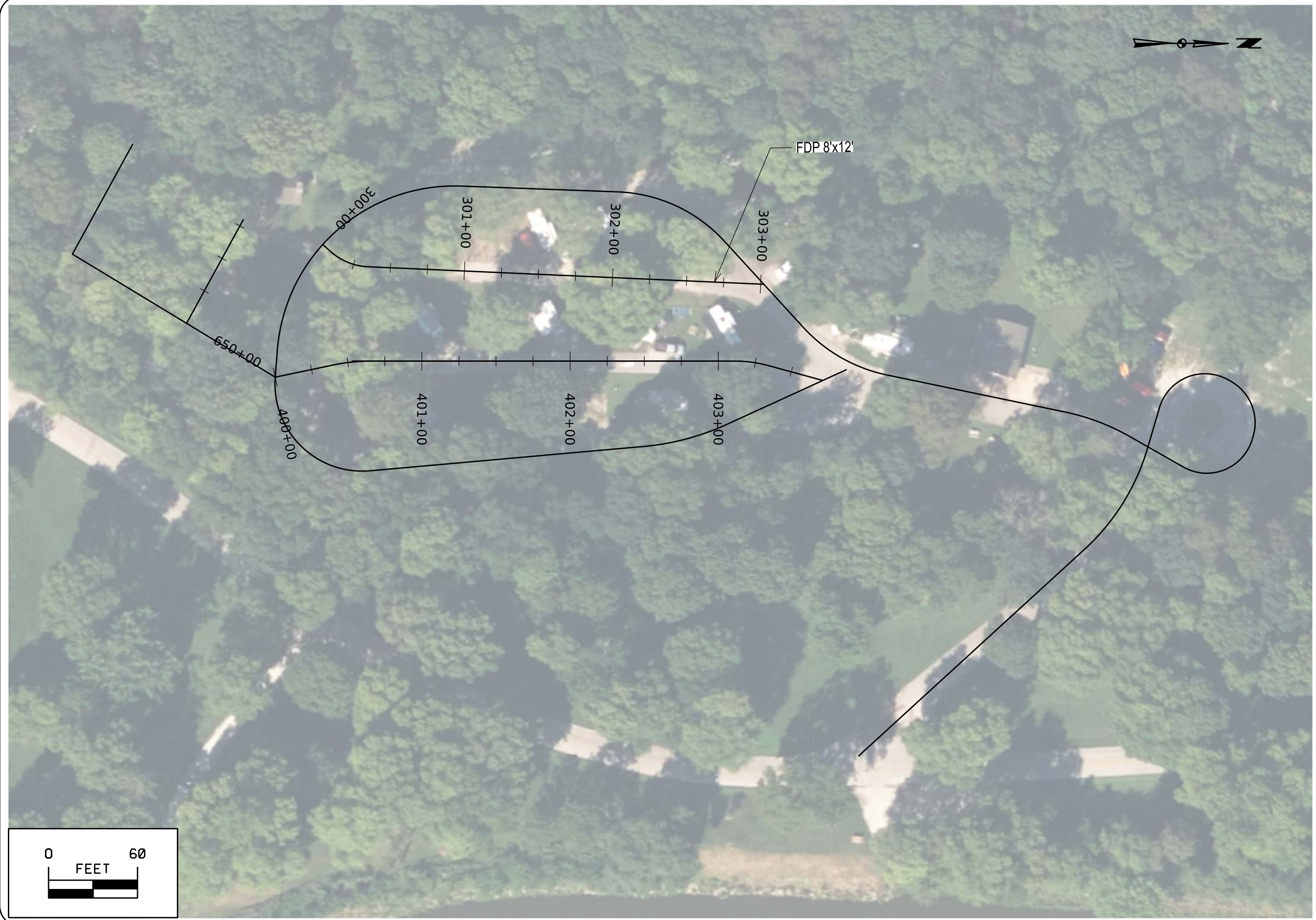
NO.	BY	REVISION

DRAWN BY: PROJECT NUMBER:
23-02-94-01

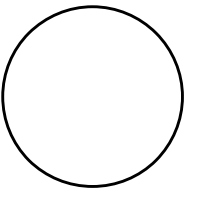
CHK'D BY: DATE:

SHEET NO:

D.04



CONSULTANT:



**IOWA DEPARTMENT OF
NATURAL RESOURCES**

ENGINEERING SERVICES - WALLACE BUILDING
502 E. 9TH ST., DES MOINES, IA 50319-0034



SITE PLAN

ROAD MAINTENANCE FOR:

DOLLIVER MEMORIAL STATE PARK

WEBSTER COUNTY

NO.	BY	REVISION

DRAWN BY: PROJECT NUMBER:
23-02-94-01

CHK'D BY: DATE:

SHEET NO:

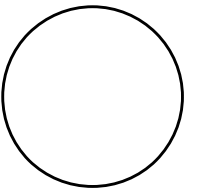
D.05



Approximate Location of Existing Box Culvert



CONSULTANT:



IOWA DEPARTMENT OF NATURAL RESOURCES

ENGINEERING SERVICES - WALLACE BUILDING
502 E. 9TH ST., DES MOINES, IA 50319-0034



SITE PLAN

ROAD MAINTENANCE FOR:

DOLLIVER MEMORIAL STATE PARK

WEBSTER COUNTY

NO.	BY	REVISION

DRAWN BY: PROJECT NUMBER:
23-02-94-01

CHK'D BY: DATE:

SHEET NO:

D.06

